

Contents

Introduction

SYSTEM REQUIREMENTS

Installation

Windows 95, Windows 98, Windows NT 4.0

Golf Courses of the World

Setting up a screen saver

Installation of each saver

Settings

Wallpaper, Security, Display

Changing savers

BONUS PROGRAMS

Visit us on the web

Separate manuals

SUPPORT

Our proud tradition of support

Voice

E-Mail

Fax

Internet

Acknowledgments

Photo Credits

Copyright

Special Thanks

SYSTEM REQUIREMENTS

Operating System

Disk Space

Hardware

Operating System

Your computer must have Microsoft Windows 95, Windows 98, Microsoft Windows NT 4.0, or higher versions of these operating systems.

Disk Space

This program requires approximately 12 megabytes of space on your hard drive. An additional 3 MB is required for each screen saver you install, except for Grand Slam which requires 15 MB.

Hardware

A mouse or pointing device is required.



To access our web site you must have a modem and a connection to the Internet.

Windows 95, Windows 98, Windows NT 4.0

1. Place the CD into your CD-ROM drive.
2. In the start-up screen click on START, then click on RUN.
3. Type in D:\CDSETUP and press Enter. (If your CD-ROM drive is not D, then change it to the letter associated with your CD-ROM drive.)
4. Follow any instructions that appear on the screen.

Golf Courses of the World

Golf Courses of the World provides you with 10 different screen saver series each containing 20 beautiful images of golf courses and golfing from around the world.

You are licensed to install one copy of the program and of each screen saver on one computer for your own personal use.

Installation of each saver

Each screen saver is provided in a "package" file. **A screen saver must be installed in Windows before it can be used.** This is only required to be done *once for each individual screen saver*. This is a requirement of Windows.

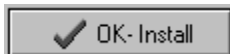
Golf Courses of the World provides an automated setup for each screen saver.

To select a screen saver to install, run the Cosmi Golf Screensavers program. A shortcut for this program is created when you install the CD:



Main menu

The image collections are named for old-fashioned golf club types. Grand Slam is ALL of the savers. Be warned, this may be slow on machines that have relatively small amounts of memory or slower processor speeds. To install a screen saver, click on the saver of your choice, and then click on the install button:



Follow the prompts to install the screen saver and make it available for your use.

See

[Other options](#)

Other options

The HELP button activates help (this file).

The ABOUT button show copyright and version information.

The CLOSE button ends the program and returns to Windows.

Wallpaper, Security, Display

After the screen saver is installed, you will then see the following options dialog box:



Screen Saver options

See

[Preview](#)

[Settings](#)

[Effects page](#)

Preview

The preview choice shows you the screen saver without needing to wait for the system to be idle.

Settings

This is the most important button. You will see the following "tabbed notebook:"



Settings

See

[Screen Saver page](#)

[Wallpaper page](#)

Screen Saver page

If you select USE AS DEFAULT SCREEN SAVER, the saver currently on the screen will become the saver activated when you are idle. You may customize when the saver starts, and how long each image will be shown.

The other advanced settings on the Screen Saver page include:

Enlarge pictures to Best fit (not recommended; images are already optimized for VGA)

Tile pictures (not recommended)

Use random image order (matter of personal taste)

Show Picture titles (not recommended)

Display pictures in black and white (not recommended)

Use sound effects (matter of personal taste)

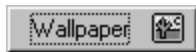
Wallpaper page



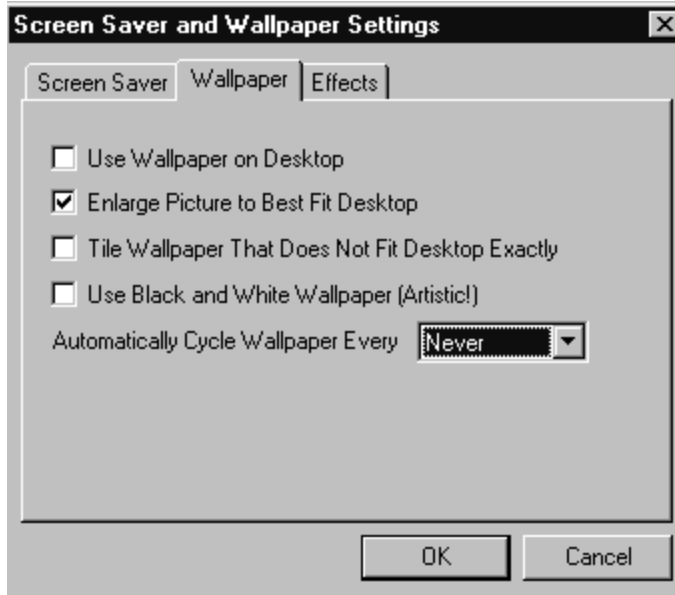
Wallpaper

Wallpaper are the images displayed on your desktop. You may switch between several different wallpaper types.

To use an image as wallpaper, highlight the image and then click on the Wallpaper button:



The program will automatically set the current image as your wallpaper.



The other advanced settings on the Wallpaper page include:

Use Wallpaper on Desktop (matter of personal taste)

Enlarge Picture to Best Fit Desktop (not recommended)

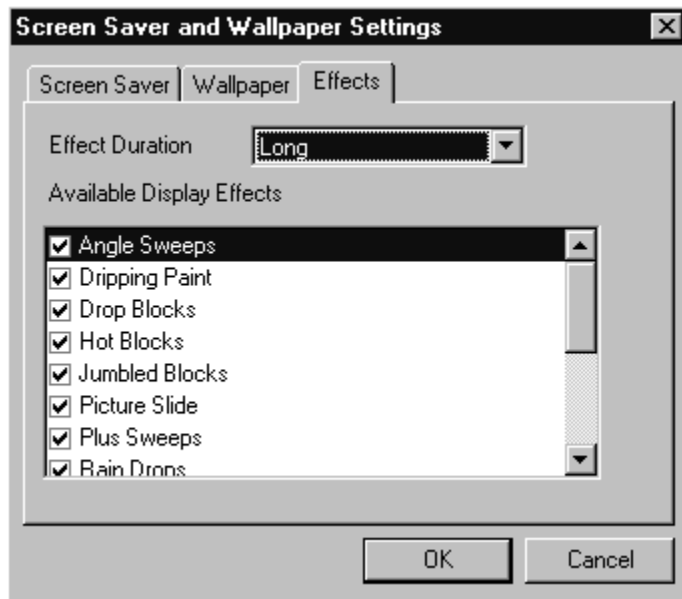
Tile Wallpaper (not recommended)

Display pictures in black and white (matter of personal taste)

Automatically cycle (matter of personal taste)

Effects page

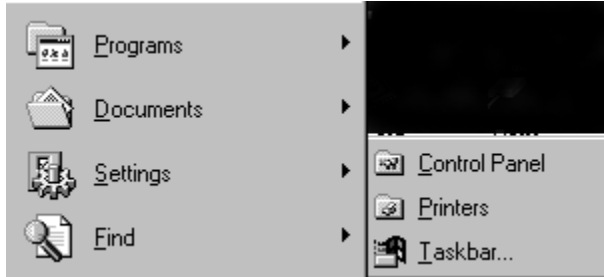
The effects page allows you to select which effects will be used between images.



Select these as you see fit.

Changing savers

After you have installed a screen saver ONCE, you may select it or change to no saver, or to any other screen saver. This is done through the Windows Control Panel:



To reach the control panel, click on the start button and select Settings, then Control Panel. Now select the DISPLAY icon:



You may then manage your screen savers from the screen saver tab:



Your screen may vary due to different installed equipment

The settings which you used when you installed a saver are recognized by Windows. You may change the settings as you see fit.

For more information on the settings, please consult Windows help.

Visit us on the web

Visit us from time to time at www.lrhsavers.com on the World Wide Web- we'll have additional free programs and special offers just for you. We hope to meet you on the web.

Separate manuals

Separate manuals are provided for the bonus programs: Sliding Picture Puzzle Challenge and Golf Clip Art.

Our proud tradition of support

We encourage all of our users to provide comments and suggestions about this program. This program is supported by voice, fax and Internet e-mail.

Voice

For telephone support, call COSMI's Customer Service at (310) 886-3510 during the hours below.
(Note: All times are in the Pacific Standard Time zone.)

Monday through Thursday, 8:30 a.m. - 12:00 noon and 1:00 p.m. - 4:00 p.m.

Friday, 8:30 a.m. – 12:00 noon.

Ö COSMI is very proud to be one of the few remaining software publishers to provide no charge customer support!

E-Mail

Support questions may be addressed to: support@cosmi.com.

Fax

You may fax us at (310) 886-3517.

Internet

Be sure to visit COSMI's Internet Web site: <http://www.cosmi.com>.

Photo Credits

Photos were obtained from the following:

Art Today; PhotoDisc, EyeWire, Adobe, Corel, The Broadmoor, Kaanapali Golf Courses

Each image is copyright of its respective creators/holders. Not affiliated with or endorsed by any golf courses depicted herein.

Copyright

Program: Copyright 1999 The Little Red Hen LLC

Portions: © Art Today; © Photodisc, © Eyewire, © Adobe, © Corel

Portions: © Auralis, Inc., © 1999 Cosmi Corp

Special Thanks

Team COSMI, the only fully integrated software developer and publisher in the budget software industry, wishes to give special thanks to Team COSMI members who made special contributions to this program:

Programming: Amy Seeberger

Packaging: Susan Randle and David Serrano

Testing/In house Programming: John Passo, Bryan Sonofsky, Emerald Burke, Carol Dunn

